



GrowSphere™ ONE

Field Monitoring Unit

Quick Setup Guide

2025



Precision
Agriculture



Overview

- A stand-alone monitoring unit, based on cellular communication
 - * It is essential to verify 3G/4G cellular coverage prior to installation
 - * Global SIM card – included
- The ONE can be connected to a wide range of sensors to collect real-time data from the field and optimize irrigation management

Specifications:

→ Type of Inputs

- 3X Analog Input
- 1X Serial Input
- 2X Digital Input

→ Environmental Specifications

- Operating temperature:
-10°C to 55°C (14°F to 131°F)
- Storage temperature:
-20°C to 60°C (-4°F to 140°F)
- Air humidity: 0 to 95%

→ Hardware

- Outdoor Installation: IP65 ,
UV protection
- Standard Compliance:
CE & FCC.
- Power Source:
 - Optional solar panel 5.5 watt
(external solar panel is
provided with a 5m
extension cable)
 - Battery rechargeable li-ion
pack 3.7V 5200mAh
 - Optional operation via
external source
(charging cable is included)

→ 3 different solar panel configurations:

1



GrowSphere™ ONE
integrated solar panel

2



GrowSphere™ ONE
external solar panel

3



GrowSphere™ ONE
Without a solar panel (relevant for specific places)

What is in the BOX

GrowSphere™ ONE Integrated solar panel



ONE monitoring unit



Integrated solar panel 5.5W

GrowSphere™ ONE External solar panel



ONE monitoring unit +
bracket



External solar panel 5.5W +
5m extension cable

GrowSphere™ ONE Without a solar panel



ONE monitoring unit

Accessories Kit:



Antenna



Charging cable



Base plate



Bird spikes



Metal cable ties



Plastic bands



Magnetic
screwdriver
2x50mm



Activation
magnet

Sensor portfolio

Digital Inputs



Water
Meter



Rain Collector



Pressure
Switch

Serial Input



NetaCap



WET150

Analog Inputs



Temp & Humid



Pressure



SM150T



Tensiometer

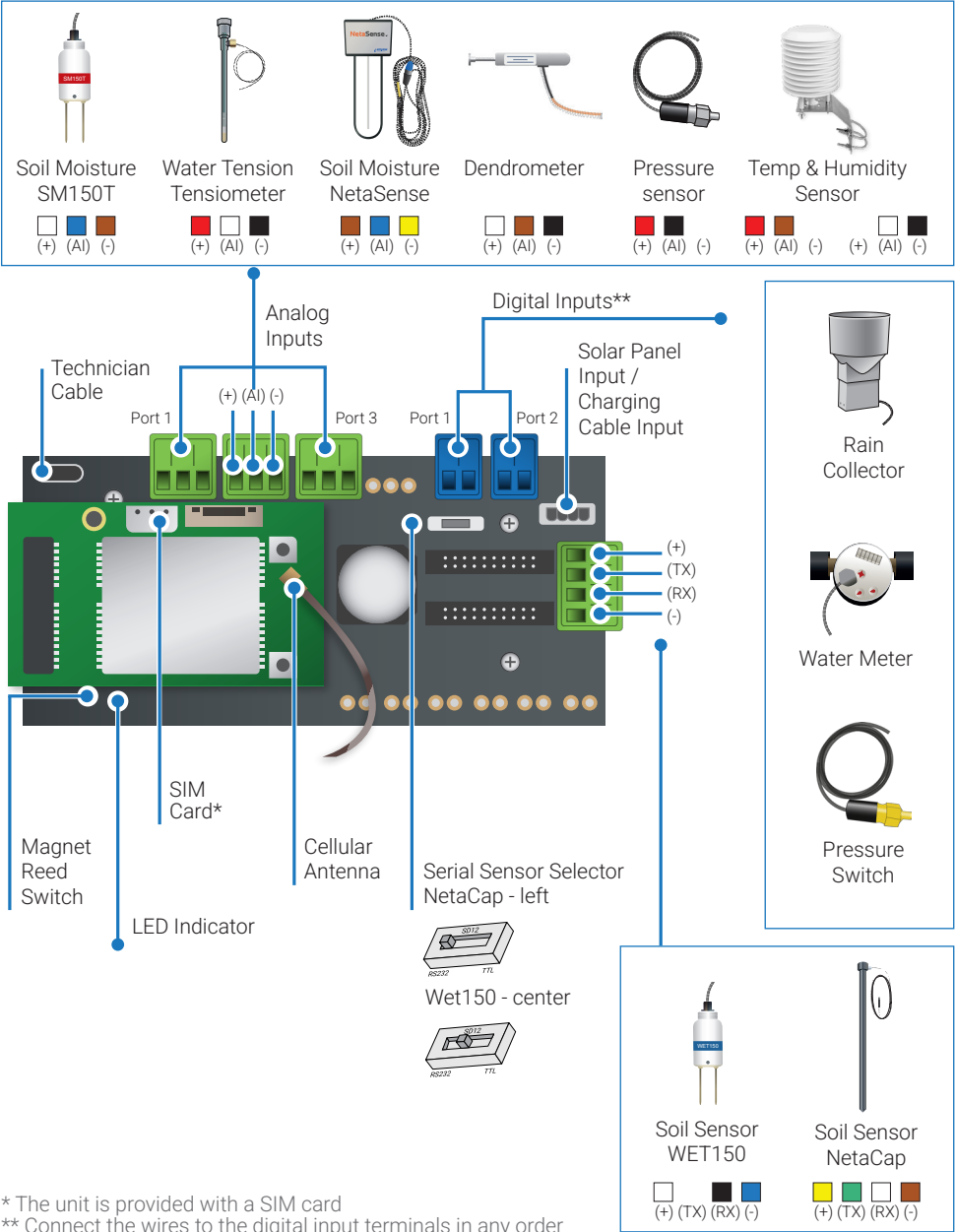


Dendrometer



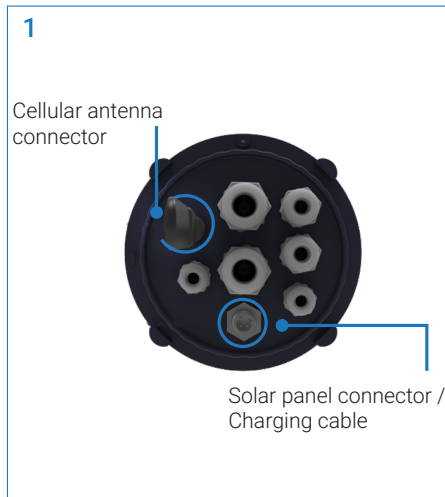
NetaSense

Sensor Wiring Diagram



Installation Preparation

1. Connect the antenna to the device



2. Connect the charging cable to the device



3. Charge the device for at least 5 hours (A blue LED will indicate battery charging)

4. After charging the device, disconnect the cable

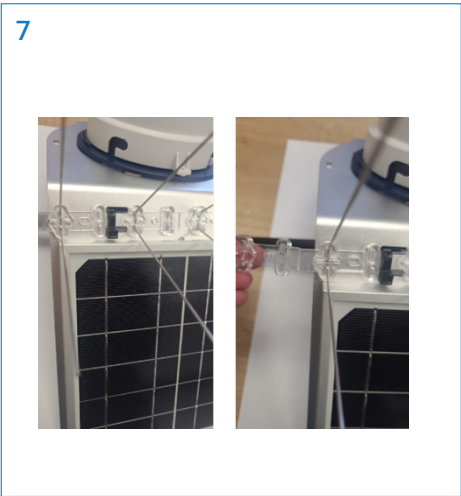
5. For the “integrated solar panel” device, assemble the device to the solar panel



6. Connect the solar-panel cable



7. Connect the bird spikes to the solar panel if required



ONE Installation

- Place the unit at least 1m above the ground, to avoid dirt inside the unit
- To improve cellular reception it is recommended to place the device above the crop
- To improve sun absorption it is recommended to install the solar panel above canopy

Integrated solar panel



External solar panel, 5m cable



Northern Hemisphere – panel facing south

Southern Hemisphere – panel facing north

Mobile Application

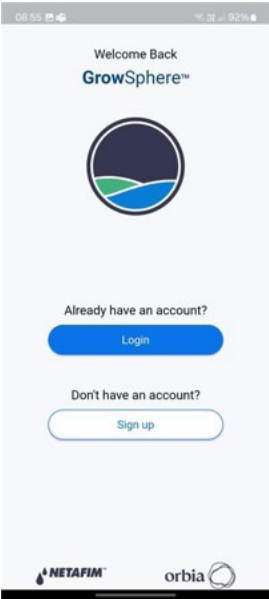
Download the **GrowSphere™** mobile application:



or simply Scan the QR code:

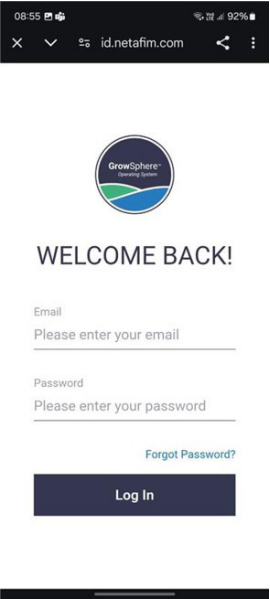


Open the **GrowSphere™** app



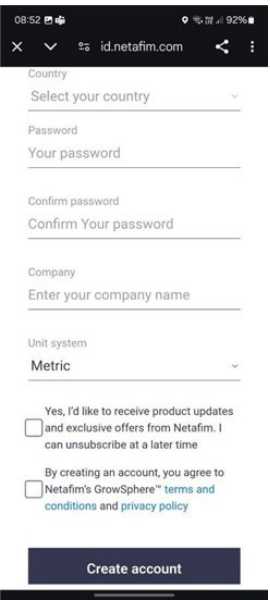
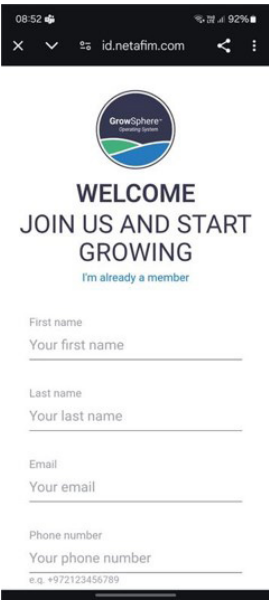
Existing user?

Click 'Login'

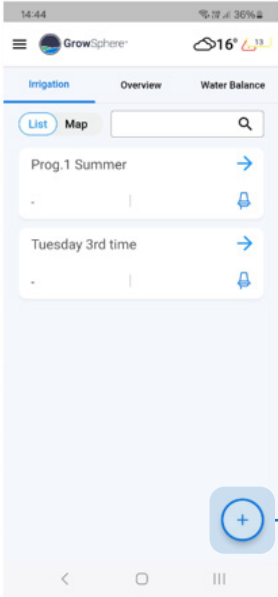


New user?

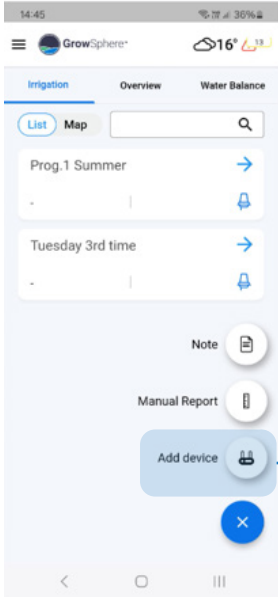
Click 'Sign up' and fill in your details



Add device

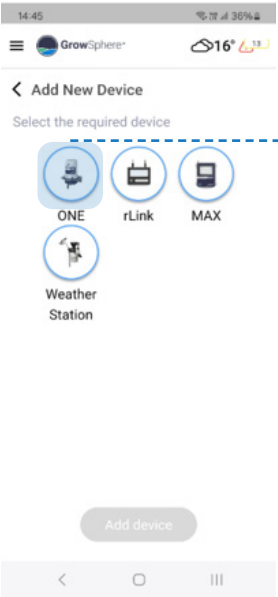


Click the + button

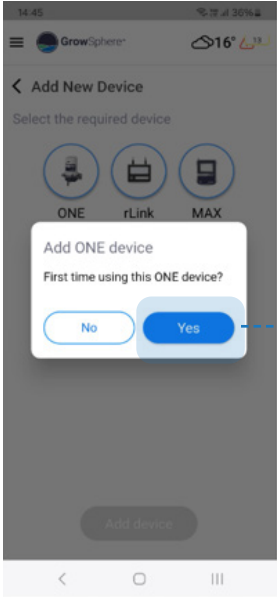


Add device

For first users –
Your journey starts here:

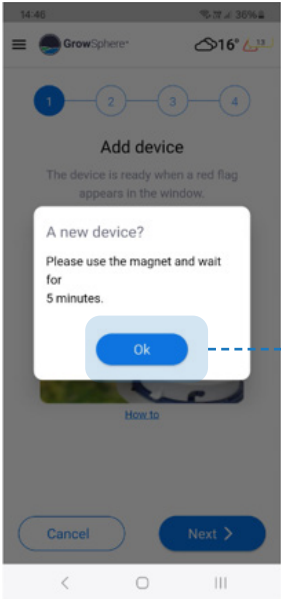


Choose the ONE

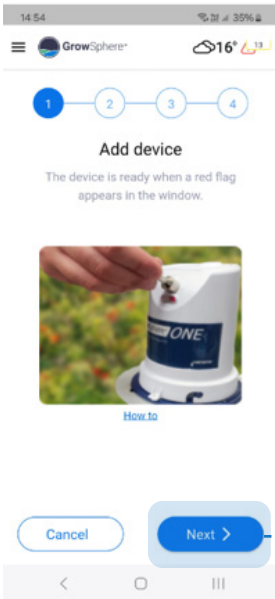


For new device click Yes

Follow the instructions

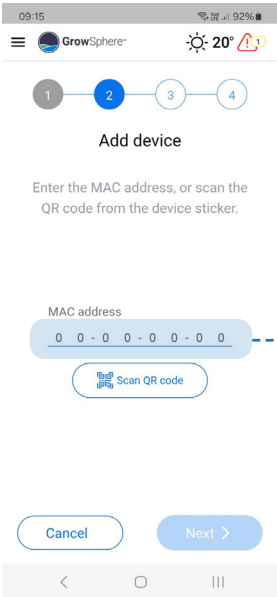


Click OK



Attach the magnet to the designated spot

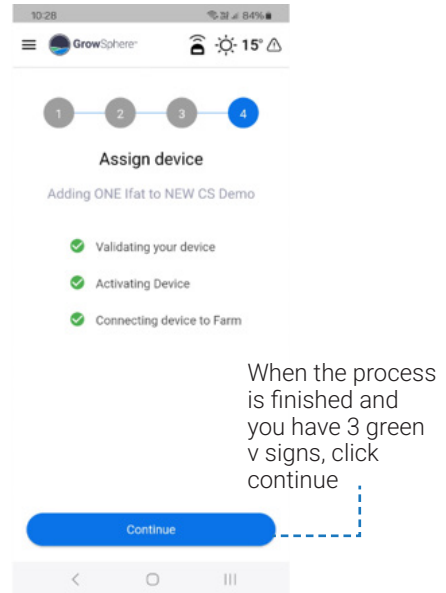
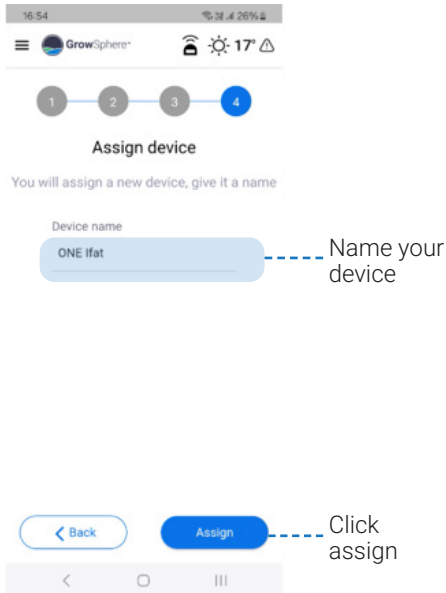
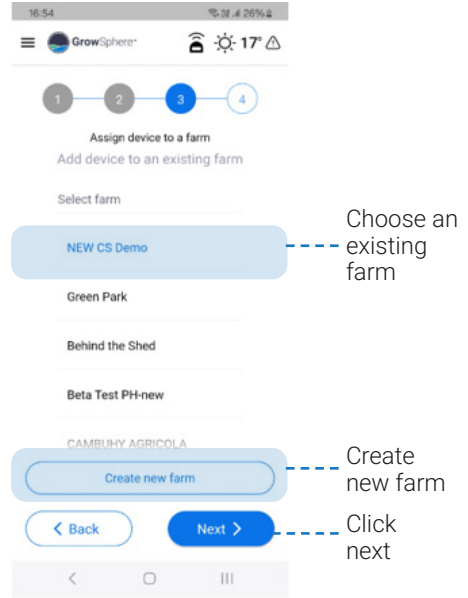
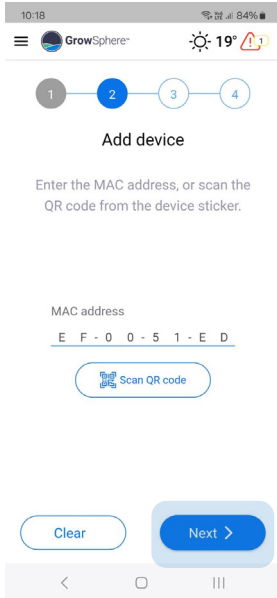
Click next



Device sticker:



Assign to a farm



Sensor configuration

For example:



----- Choose
sensors
you wish
to config



----- Click next

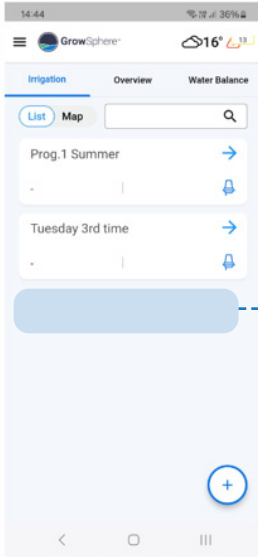


----- Confirm

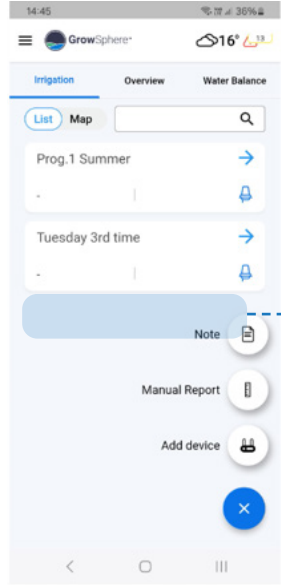


----- Choose
the sensor
length

----- Click next



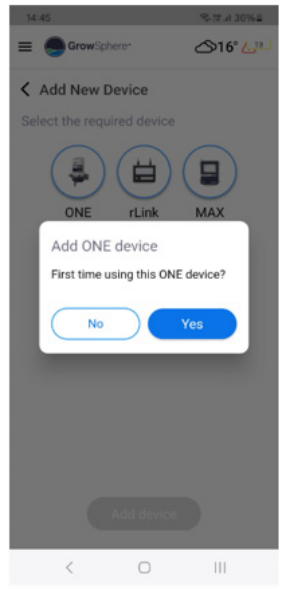
Name your sensor



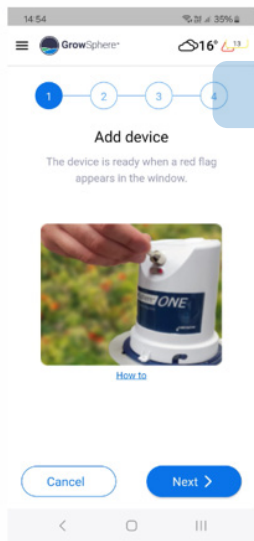
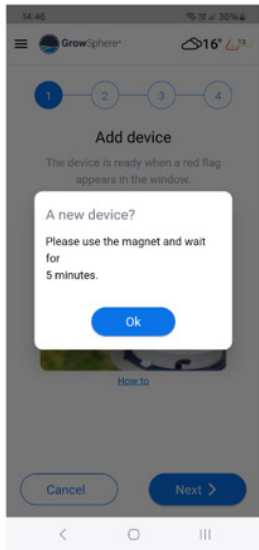
Name your sensor



Confirm

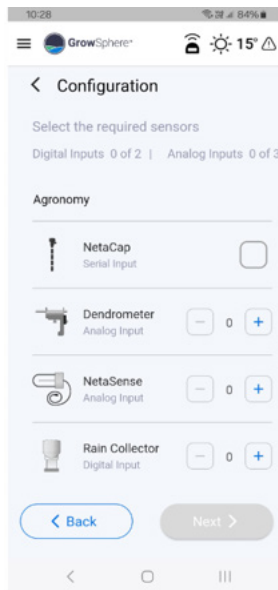
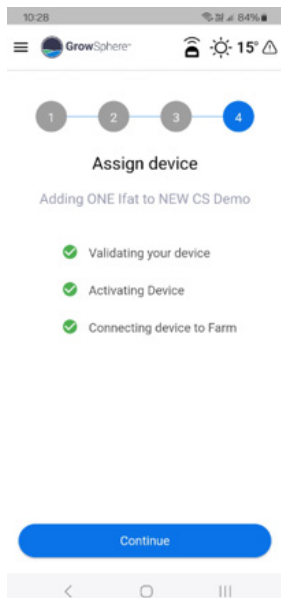
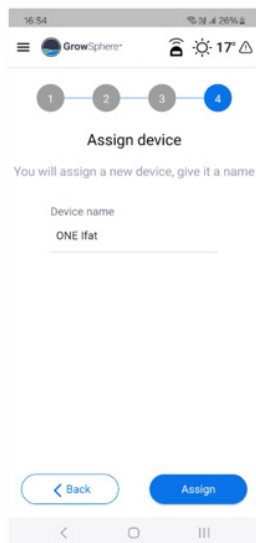
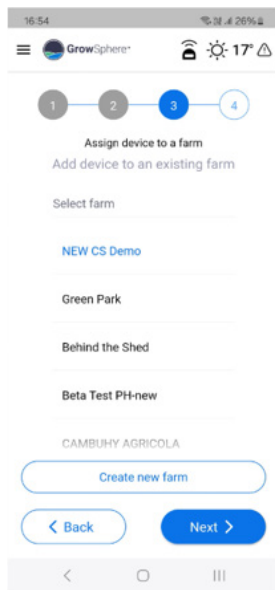


Sensor wiring

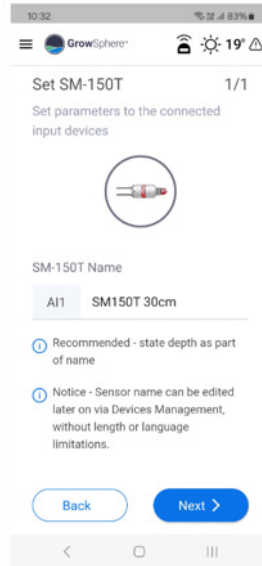
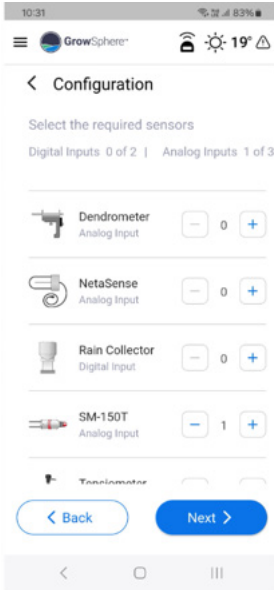


1st sensor:

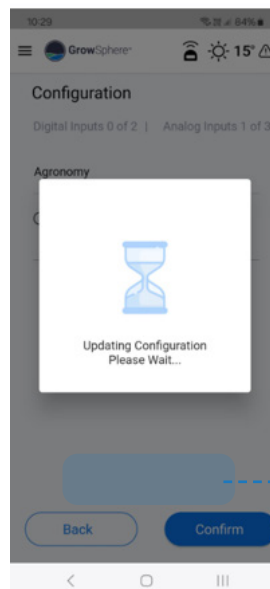




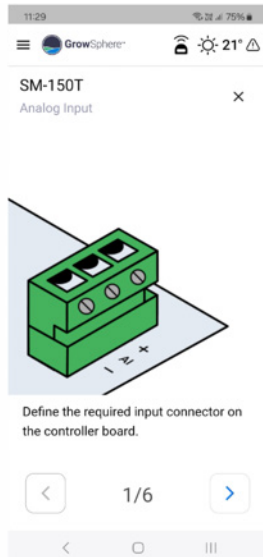
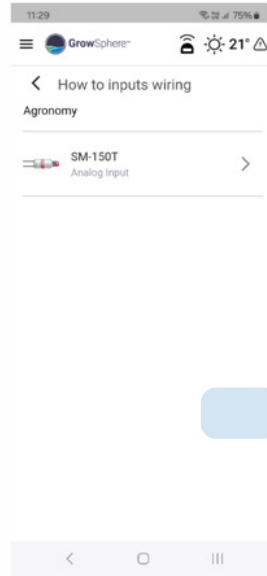
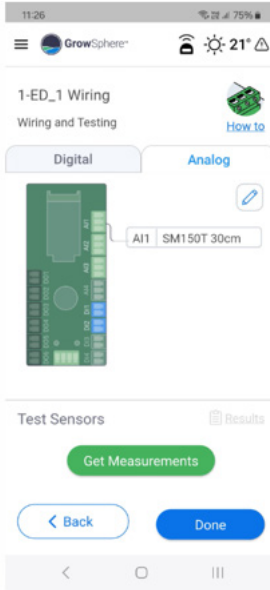
2nd sensor (example):



3rd sensor (example):



To validate correct wiring and sensor functionality, click on 'Get measurements'



For **GrowSphere™**
Support Center
Scan:





www.netafim.com